

BLUELIFT



BLUELIFT-Raupenarbeitsbühnen stehen für Sicherheit und Zuverlässigkeit.

Sie sind günstig, beliebt und vielfältig für diverse Innen- und Außen-Einsätze geeignet.

BLUELIFT-Raupenbühnen sind bekannt für ihre fortschrittliche Technologie, das geringe Eigengewicht, hohe Leistungsdaten und kompakte Abmessungen. Dabei sind sie einfach zu bedienen.

Innovative BLUELIFT-Entwicklungen basieren auch zukünftig auf Kunden-Bedürfnissen.

All diese Aspekte, kombiniert mit dem **RUTHMANN** After-Sales-Service, definieren das BLUELIFT-Engagement für höchste Qualität.

Mit „BLUELIFT“-Raupenarbeitsbühnen ist **RUTHMANN** „back on track“.



Bluelift spider platforms stand for safety and reliability.

They are favorable in pricing, popular and diversely suited for various indoor and outdoor applications.

Bluelift spider platforms are well-known for their advanced technology, their low overall weight, high performance and compact dimensions. Furthermore, they are easy to use.

Innovative Bluelift developments will continue to be based on customer needs.

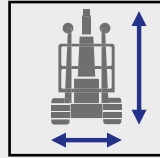
All these aspects, combined with the **RUTHMANN** after-sales service, define the Bluelift commitment to excellence.

RUTHMANN is ‚back on track‘ with Bluelift spider platforms.

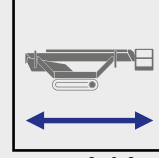




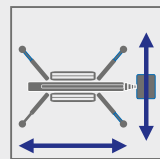
C12/6.5 / ...H / ...HB



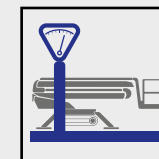
0,78 m / 2 m



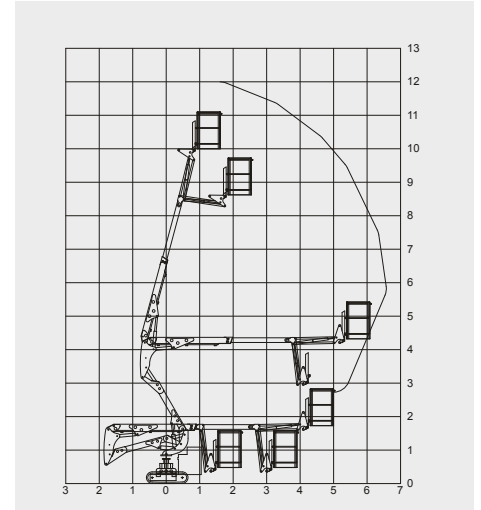
max. 4,14 m
min. 3,45 m



2,6 m x 2,6 m



1500 kg



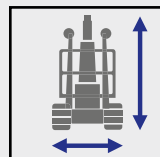
TECHNISCHE DATEN / TECHNICAL DATA

Arbeitshöhe / working height, max.	12 m
Seitliche Reichweite / lateral outreach, max.	6,5 m
Korblast / basket load	120 kg (C12/6.5) 200 kg (C12/6.5H C12/6.5HB)
Arbeitskorb / basket size	0,85m x 0,7m x 1,1m (C12/6.5) 1,3m x 0,7m x 1,1m (C12/6.5H C12/6.5HB)
Drehbereich / range of rotation	340°

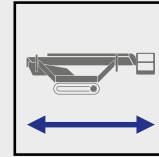
Eigengewicht / overall weight	1500 kg (C12/6.5) 1550 kg (C12/6.5H) 1920 kg (C12/6.5HB)
Fahrtgeschwindigkeit / travel speed, max.	1,5 km/h
Steigfähigkeit / gradeability, max.	28%
Benzinmotor / combustion engine	Honda GX390
Elektromotor / electric motor	230V - 2,2 kW



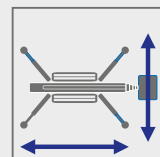
C13



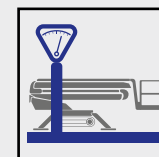
0,78 m / 1,95 m



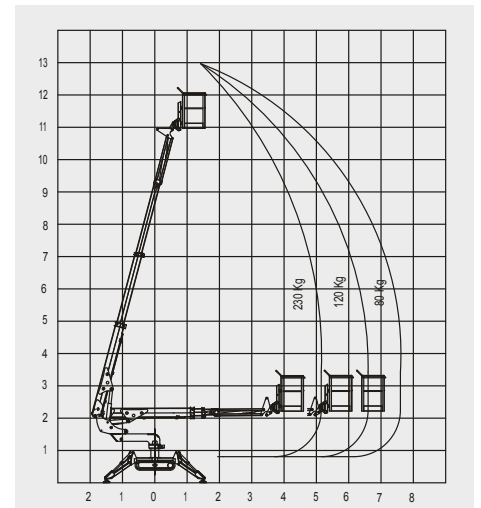
max. 4,59 m
min. 3,88 m



3 m x 3 m



1500 kg



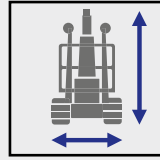
TECHNISCHE DATEN / TECHNICAL DATA

Arbeitshöhe / working height, max.	13 m
Seitliche Reichweite / lateral outreach, max.	7,5 m
Korblast / basket load	230 kg
Arbeitskorb / basket size	1,3m x 0,7m x 1,1m
Drehbereich / range of rotation	340°
Eigengewicht / overall weight	1500 kg
Fahrtgeschwindigkeit / travel speed, max.	1,5 km/h

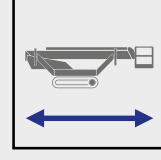
Steigfähigkeit / gradeability, max.	28%
Benzinmotor / combustion engine	Honda GX390
Elektromotor / electric motor	230V - 2,2 kW



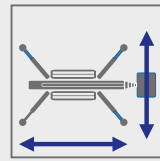
SA16



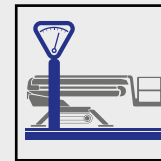
0,78 m / 1,99 m



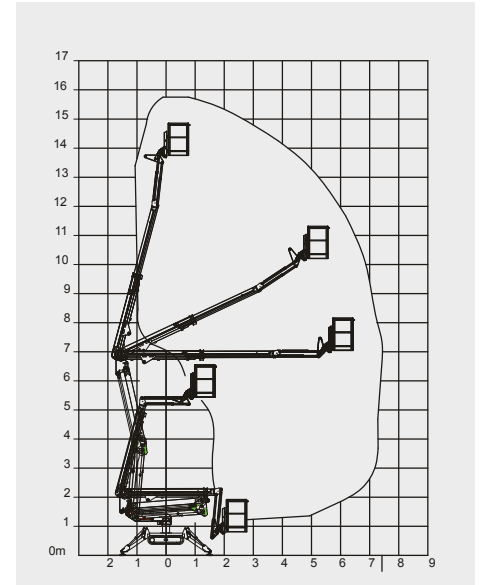
max. 4,44 m
min. 3,75 m



3 m x 3 m



1900 kg

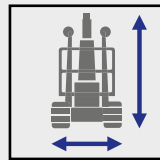


TECHNISCHE DATEN / TECHNICAL DATA

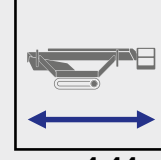
Arbeitshöhe / working height, max.	16 m	Steigfähigkeit / gradeability, max.	28%
Seitliche Reichweite / lateral outreach, max.	7,4 m	Benzinmotor / combustion engine	Honda iGX
Korblast / basket load	230 kg	Elektromotor / electric motor	230V - 2,2 kW
Arbeitskorb / basket size	1,3m x 0,7m x 1,1m		
Drehbereich / range of rotation	340°		
Eigengewicht / overall weight	1900 kg		
Fahrtgeschwindigkeit / travel speed, max.	1,5 km/h		



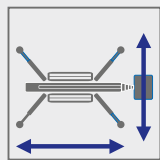
SA18 / ...HB



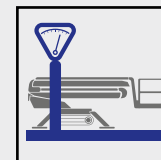
0,78 m / 1,99 m



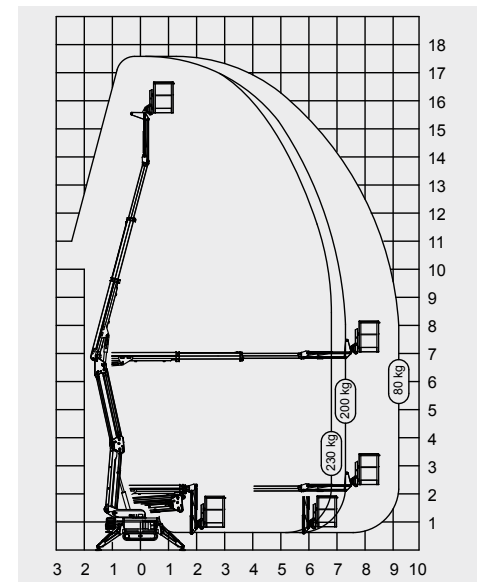
max. 4,44 m
min. 3,75 m



3 m x 3 m



1950 kg



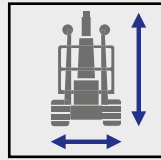
TECHNISCHE DATEN / TECHNICAL DATA

Arbeitshöhe / working height, max.	17,8 m	Fahrtgeschwindigkeit / travel speed, max.	1,5 km/h
Seitliche Reichweite / lateral outreach, max.	9,3 m	Steigfähigkeit / gradeability, max.	28%
Korblast / basket load	230 kg	Benzinmotor / combustion engine	Honda iGX
Arbeitskorb / basket size	1,3m x 0,7m x 1,1m	Elektromotor / electric motor	230V - 2,2 kW
Drehbereich / range of rotation	340°		
Eigengewicht / overall weight	1950 kg (SA18)		
	2200 kg (SA18HB)		

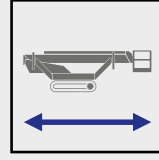




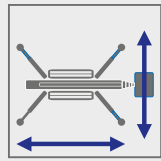
SA22



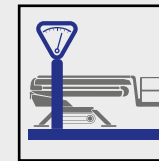
0,94 m / 1,97 m



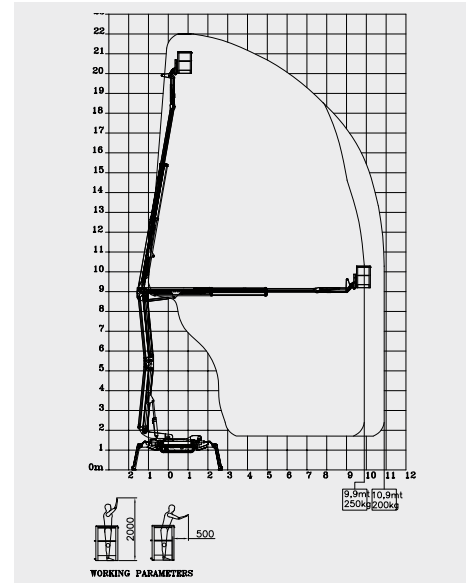
max. 5,20 m
min. 4,52 m



4,0 m x 4,85 m



2990 kg



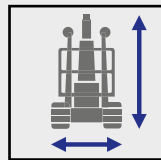
TECHNISCHE DATEN / TECHNICAL DATA

Arbeitshöhe / working height, max.	22 m
Seitliche Reichweite / lateral outreach, max.	10,9 m
Korblast / basket load	250 kg
Arbeitskorb / basket size	1,3m x 0,7m x 1,1m
Drehbereich / range of rotation	340°
Eigengewicht / overall weight	2990 kg
Fahrtgeschwindigkeit / travel speed, max.	1,5 km/h

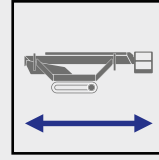
Steigfähigkeit / gradeability, max.	28%
Benzinmotor / combustion engine	Honda iGX
Elektromotor / electric motor	230V - 2,2 kW



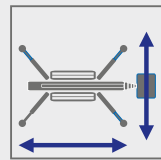
SA26



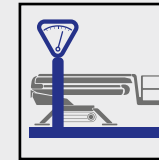
0,99 m / 1,98 m



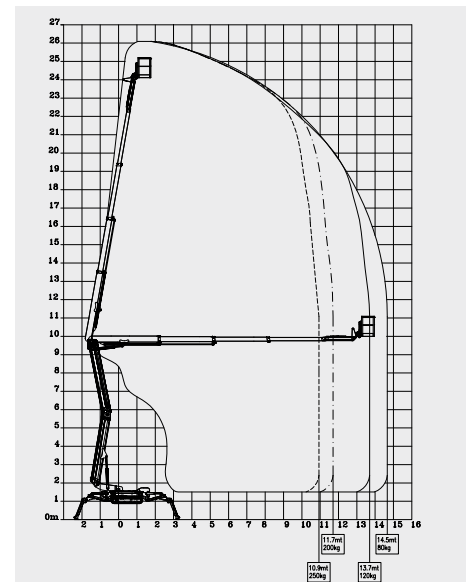
max. 5,58 m
min. 4,91 m



4,30 m x 4,44 m



3350 kg



TECHNISCHE DATEN / TECHNICAL DATA

Arbeitshöhe / working height, max.	26 m
Seitliche Reichweite / lateral outreach, max.	14,5 m
Korblast / basket load	250 kg
Arbeitskorb / basket size	1,3m x 0,7m x 1,1m
Drehbereich / range of rotation	360°
Eigengewicht / overall weight	3350 kg
Fahrtgeschwindigkeit / travel speed, max.	1,5 km/h

Steigfähigkeit / gradeability, max.	28%
Benzinmotor / combustion engine	Honda iGX
Elektromotor / electric motor	230V - 2,2 kW



STEIGER®



ECOLINE



RUTHMANN Italia S.r.l.

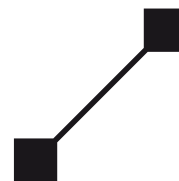
Via Santa Maria del piano di Sotto 91/B
47854 Montescudo (RN)
ITALY

Phone: +39 0541 756872

Fax: +39 0541 729800

Internet: www.ruthmann.it

E-mail: info@ruthmann.it



RUTHMANN
professionals at work

BLUELIFT

www.ruthmann.it