





STEIGER® T 300 XS








WORLD PREMIERE

More compact and flexible more than ever!

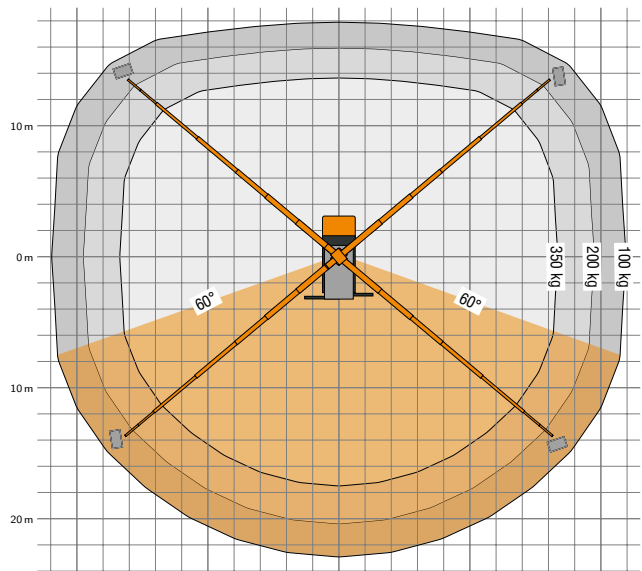
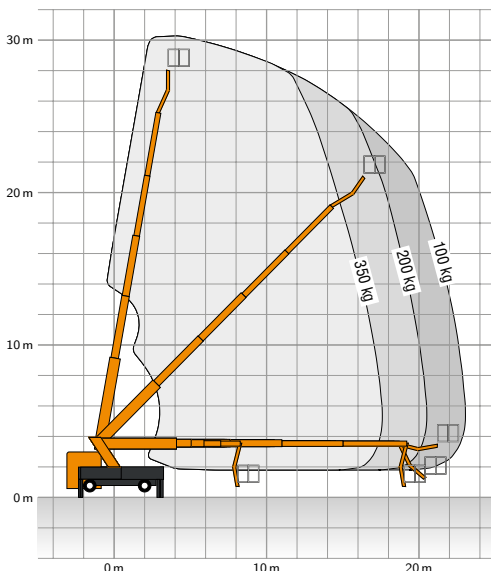
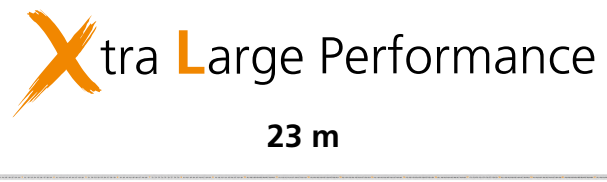


Drivable with truck driving licence C 1/3 (7.5 t)

-  30 m working height
-  Outreach: 23 m
-  Only 7.59 m vehicle overall length
-  Stable turret construction (less maintenance)

-  Characterized through huge compactness with top performance data
-  Short overall length for increased manoeuvrability (huge short rear overhang)
-  Modern construction with high stability and safety
-  Shorter, stable base frame construction
-  Shorter construction due to optimised profile shape
-  Boom extension by means of two telescopic cylinders
-  Increased basket load: 350 kg in combination with huge outreach

EXTRA SHORT CONSTRUCTION with top performance data



STEIGER® T 300 XS

The new **RUTHMANN STEIGER® T 300 XS** is with a length of **7.59 m** more than 60 cm shorter than the actual STEIGER® T 300 and impresses as **30 meter working platform on a 7.49 t chassis**. The working platform achieves **23 m outreach** – a full 2 meters more as its predecessor.

Thanks to the **shorter overall length** and reduced rear overhang, the STEIGER® T 300 XS can be used even more safely in urban spaces. Thanks to the higher outreach, it covers a wider application range without having to move the working platform. This makes the new RUTHMANN STEIGER® T 300 XS interesting for several fields of applications from building cleaning to tree pruning. Further interesting application possibilities result from the **increased basket load** of now even **350 kg** combined with the particularly high outreach.

The RUTHMANN engineers were able to reduce the length of the retracted telescope by 60 centimetres in the redesign. This was made possible by an **optimised and more stable boom profile** as well as the **more compact boom heads** of the STEIGER® T 300 XS which have already proven themselves in a similar form on the RUTHMANN STEIGER® T 900 HF.

For the first time, **two telescopic cylinders** are now used in the high-strength fine-grained steel construction to extend the telescope. Through this, the telescope profile has further been optimised.

The **new turret construction** of the T 300 XS offers a further particularity. Due to the new geometrical shape, the weight could be further optimised and the stability increased.

Thanks to the **shorter, completely redesigned base frame**, the chassis has also been shortened accordingly.

RUTHMANN relies here on jack boxes and turret tube made of **high-strength fine-grained steel** in order to achieve a high torsion resistance and maximum performance data.

The **STEIGER® T 300 XS** offers great features also “on the ground”. The **new jack control stand**, which is still very popular in the TB/TBR range, is used **as standard** for the first time in the T range. The new control stand is optimally integrated on the chassis at eye level and offers in addition to the reliable stabilization types and comfort functions a practicable stabilisation of the machine from the vehicle at all times.

The basket load has been increased by a further 30 kg to achieve **a maximum of 350 kg** thanks to the stable new telescope design of the STEIGER® T 300 XS. The usual working basket from the T range is compatible with other working baskets from the same range. The modern RUTHMANN Cockpit is used, with numerous comfortable functions and real-time readable operating data. It provides the working platform operator with all relevant data at all times. The STEIGER® T 300 XS can be equipped with all working baskets of the range. The proven and robust **hydraulic basket rotating device** of 2 x 90° is also **standard** on the T 300 XS.

RUTHMANN also relies on the **multi-chassis concept** for the STEIGER® T 300 XS. The working platform can be mounted on different 7.49 t up to 8.6 t chassis from Mercedes-Benz, MAN or Iveco.

| | | | |
|---|-------------|---|----------------------|
|  | 30 m |  | 1.70 x 0.86 m |
|  | 23 m |  | 350 kg |
|  | 22 m |  | 3.6 m |
|  | 500° |  | 7.59 m |
|  | 185° |  | 3.6 m |
|  | 5° |  | 7,490 kg |

*Technical alterations reserved, all data are approximate



RUTHMANN Holdings GmbH

Ruthmannstraße 4 | 48712 Gescher | GERMANY

Phone: +49 2863 204-0

Fax: +49 2863 204-212

Internet: www.ruthmann.de

E-mail: info@ruthmann.de