

STEIGER® T 1000 HF



SKY
performance
highflex







STEIGER® T 1000 HF

The difference maker

TOP PERFORMANCE DATA*

World's most manoeuvrable 100 m platform in the truck-mounted aerial work platform market with DRS and HighFlex technology

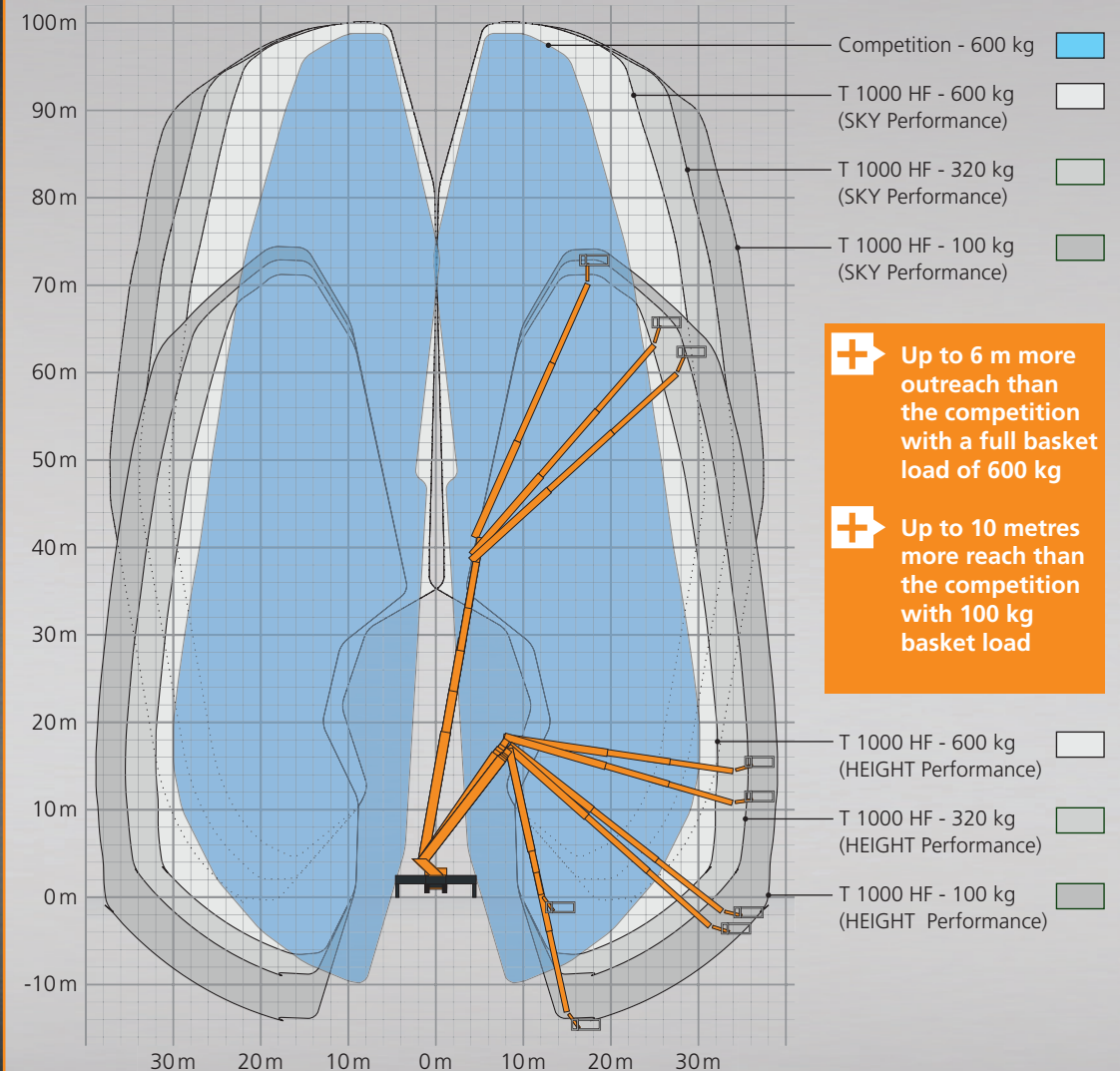
-  100 m working height
-  39 m lateral reach –
Up to 10 metres more than the competition
-  Total weight \geq 53 tonnes -
around 10 tonnes lighter than the competition
-  Overall length 16.35 m

SKY
performance
highflex



*Subject to technical changes, all specifications are approximate

Working area compared to the competition



PROVEN DOUBLE CONCEPT






UNIQUE: The world's most manoeuvrable in the truck-mounted aerial work platform market

Working in HEIGHT and SKYperformance mode

New application possibilities thanks to the principle of using a large 100-metre device as a proven HEIGHT performance STEIGER®.

User benefits:

-  Complete 'up, over and back function' for maximum operational flexibility
-  2-in-1 platform leads to higher utilisation rates = faster return on investment (RoI) | short-term rental possible
-  Familiar controls for operators similar to other STEIGER®s in the HP/HF series

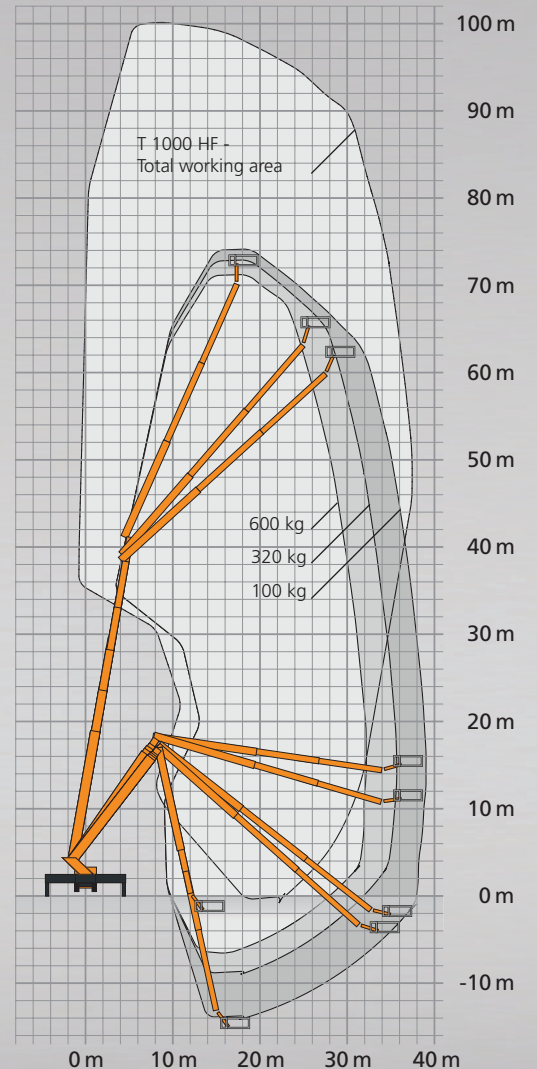
SKY performance mode

Locked lower boom 80° – 88,5° angle of elevation



HEIGHT performance mode

Lower boom unlocked < 80° straightening angle

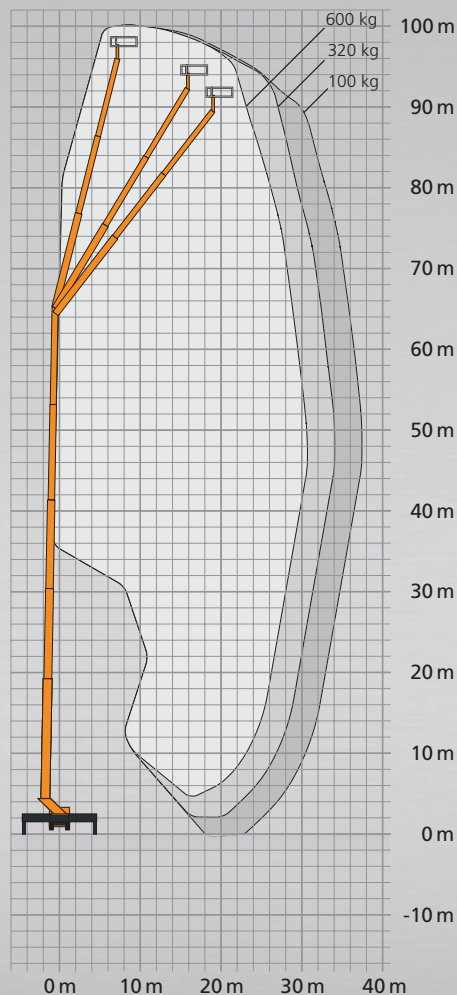


PERFORMANCE DATA in SKY performance mode

- + 100 m working height
- + Up to 39 m reach (up to 6 m more reach than the competition)
- + Up to 10 m more reach at great heights thanks to the flexible angle of the lower arm (80° – 88.5°) and greater upper arm length
- + Full 600 kg basket load with completely telescoped upper arm (if upper arm > 64° to the horizontal) and in any position of the basket (also telescoped)
- + Utilisation of the highflex technology of the proven HEIGHT performance STEIGER® series
- + The lower arm features electronic automatic locking, activated only when needed, i.e. at maximum working heights at an elevation angle of 80° – 88.5°
- + Max. telescoped upper arm length 37 m

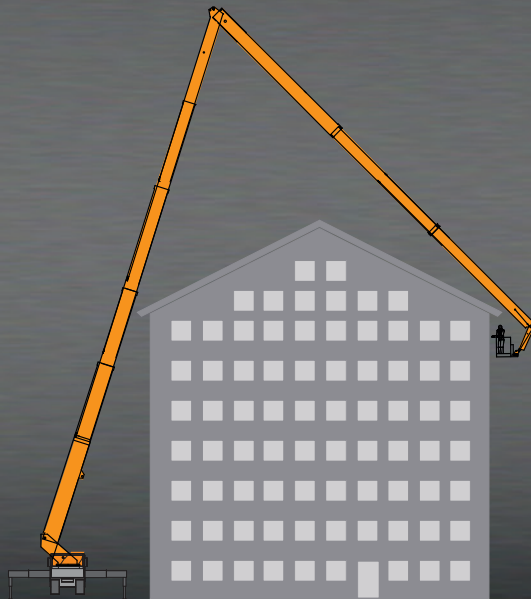
SKY performance mode

Locked lower boom 80° – 88.5° angle of elevation



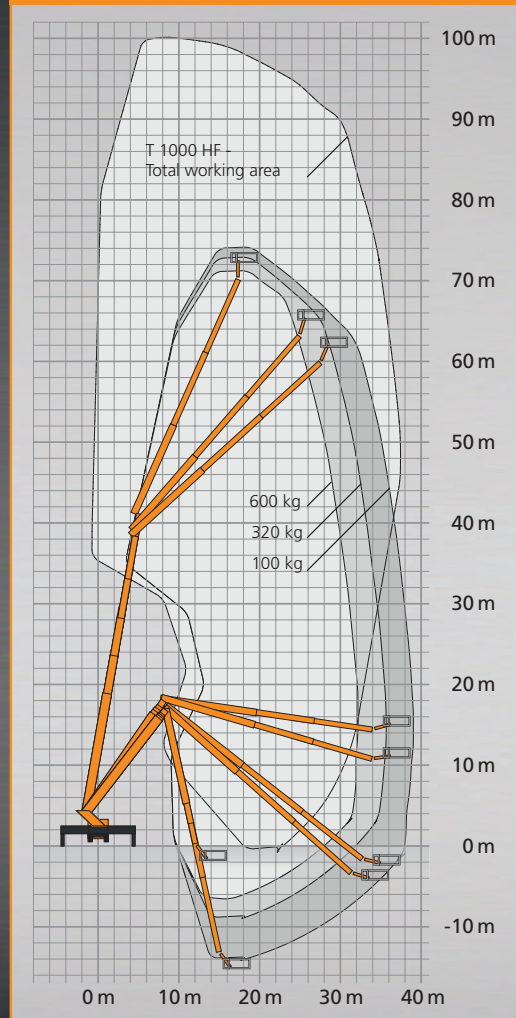
PERFORMANCE DATA in HEIGHT performance mode

- + For applications where flexibility of use is required rather than maximum working height
- + Utilisation of the highflex technology of the proven HEIGHT performance STEIGER® series with full highflex function for 'up, over and back'
- + 2-in-1 machine leads to higher utilisation rates = quick return on investment (RoI) | Short-term rental possible



HEIGHT performance mode

Lower boom unlocked < 80° straightening angle



DIMENSIONS



THE MOST COMPACT TRUCK-MOUNTED AERIAL WORK PLATFORM IN ITS CLASS

- ✚ Total length 16.35 m
- ✚ Total weight \geq 53 tonnes: around 10 tonnes lighter than the competition
- ✚ Vehicle height 3.95 m
- ✚ Front overhang 2.64 m
- ✚ Rear overhang approx. 3.37 m - 0,4 m / - 14 %
- ✚ No basket at the rear: less risk of damage when manoeuvring
- ✚ Convenient basket access
- ✚ Mounting on standard chassis: lower weight, lower fuel consumption. More power per tonne, 500 hp on 53 t, or 500 hp on 63 t, shorter transport times
- ✚ Available on several chassis

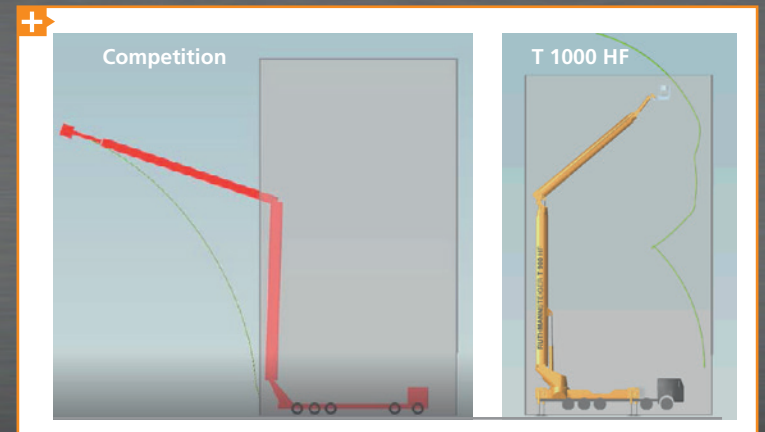
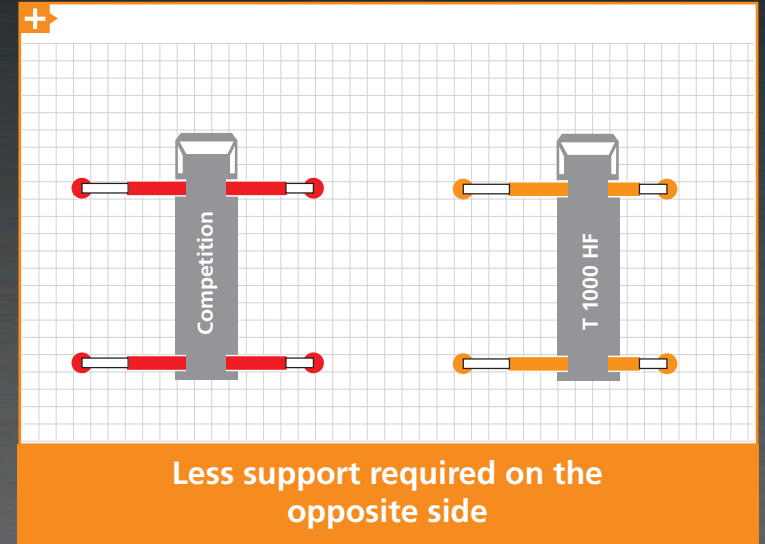


FLEXIBILITY - COMPARISON OF COMPETITION VS. T 1000 HF



Scan here for video

Special Feature T 1000 HF:
„up, over and back“



The T 1000 HF allows for setup in areas with minimal space requirement

PROVEN TECHNOLOGY AND FEATURES

- + Stable boom system thanks to proven profiles with multiple edging of the high-tech steel
- + Lower arm 5-fold telescopic
- + Easy handling thanks to the same function and handling as previous STEIGER® large-scale models reduced training and operator costs (holiday/replacement arrangements etc.).
- + Fully-fledged control station on the turret (optional)
- + Information on vehicle operating status in the basket and/or information on STEIGER® operating status in the driver's cab (optional)
- + Various prop steering positions at the rear of the vehicle (left + right) - Tower steering position - Secondary steering (optional equipment)
- + Base plates mounted on supports
- + COCKPIT (control unit in the cage)
- + Identical components to other models bring added value when procuring and stocking spare parts
- + Proven control system: simple operation, no operator familiarisation, short training times



Thanks to the identical mode of operation, operators of other HEIGHT performance models can also use the SKY performance STEIGER® T 1000 HF after a simple instruction.

DRS SYSTEM INCLUDED

The DRS generates more working space, more reach and therefore more operational flexibility. This results in the potential for more capacity utilisation, more sales and a faster ROI.



+ DRS CAN DO MORE

In addition to range maximisation, RUTHMANN offers three assistance systems: 'Wind', 'Basket loading' and 'Support load'.

+ WORKING IN WIND FORCE 8:

Simply set the wind force before starting work. The DRS adjusts the possible reach under the premise of maximum platform stability.

+ WORKING WITH 600 KG IN THE BASKET:

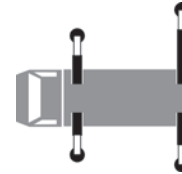
Simply set the desired basket load in advance. 3 levels selectable: deactivated, 320 kg or 600 kg

+ WORKING WITH 50 % SUPPORT LOAD:

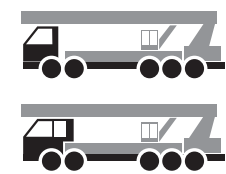
Each support can be individually preset to 6 levels: 50 %, 60 %, 70 %, 80 %, 90 % and 100 % of the maximum support load.

Maximises STEIGER® performance through on-board range calculation. Reach calculation in real time based on individual STEIGER® configuration: No matter which ...

... Support position



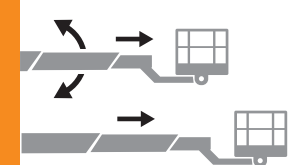
... Carrier vehicle variant



... Basket load



... Outrigger position



... Special attachments



... Desired payload



HEIGHT PERFORMANCE TECHNOLOGY RÜSSEL®

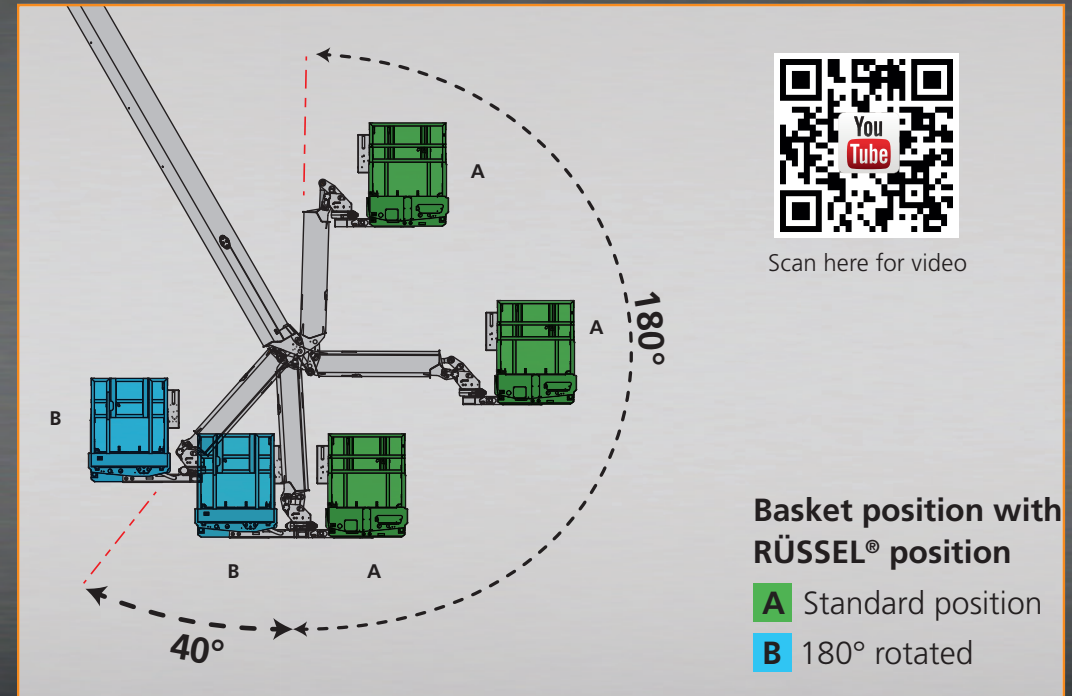
220° true rotation angle of the RÜSSEL® due to optimised basket arm joint

- ✚ 220° true rotation angle of the RÜSSEL® due to optimised basket arm joint
- ✚ Vertical work basket ideal for 'under and up' as well as all 'up, over and back' options with the RÜSSEL® lowered
- ✚ Modular design



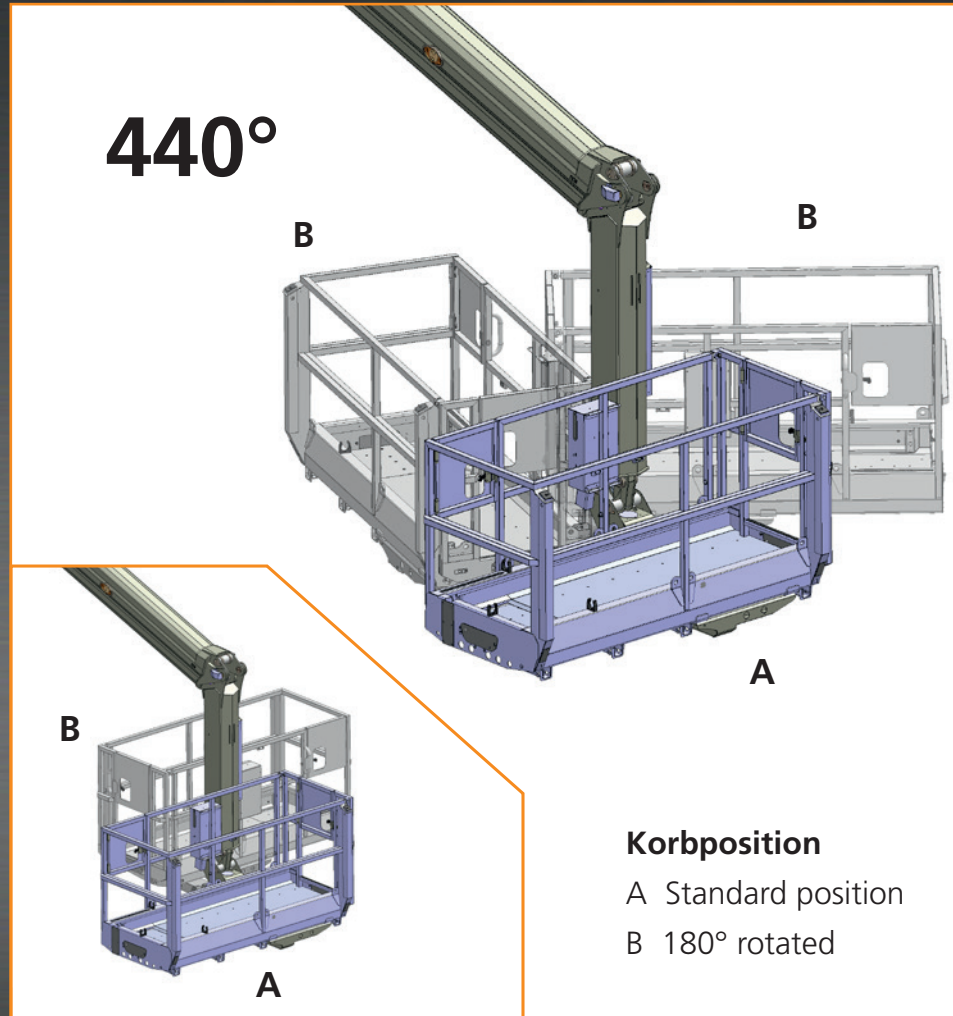
i The world's **ONLY** 100 metre platform with the **highflex** concept

i Significantly **MORE** flexibility in use with the **highflexRÜSSEL®**



More flexibility in use with the **highflexKORB**

- + 2 x 220° basket rotation
- + Largest basket on the market 3.82 m x 0.97 m telescoped
- + 600 kg basket load
- + Fewer disruptive factors in the basket
- + All positions also possible with extended basket





Features and special equipment



- + Sturdy design, reinforced floor
- + Barrier-free, heated, illuminated basket floor
- + Lift-up system
- + Camera basket
- + PPE anchor points (22.2 kN) also in the telescoped part of the basket
- + Cage floor lighting
- + Movable folding seat
- + More cleaning flaps
- + Ambient lighting and much more

STEIGER® T 1000 HF

DEVELOPED FROM PRACTICE FOR PRACTICE!

-  Developed with experienced operators of large machines
-  Based on experience with over 60 STEIGER® T 900 HF machines in operation worldwide






REAL TIME CONNECT – RTC

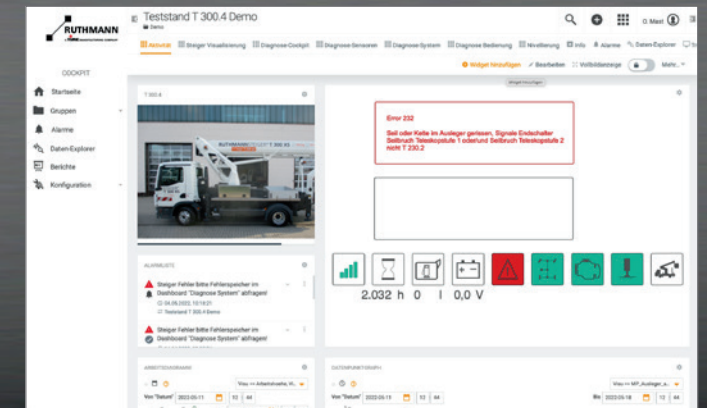
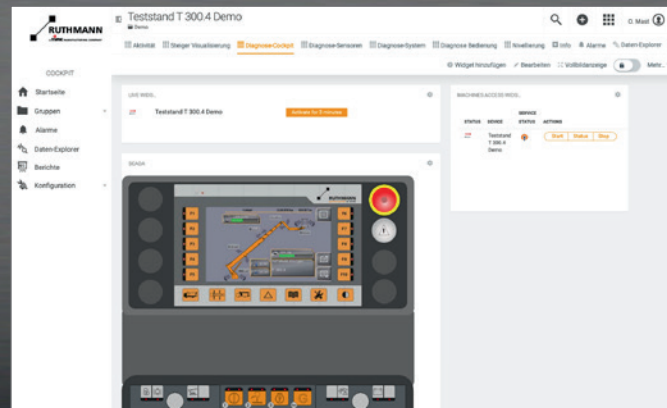
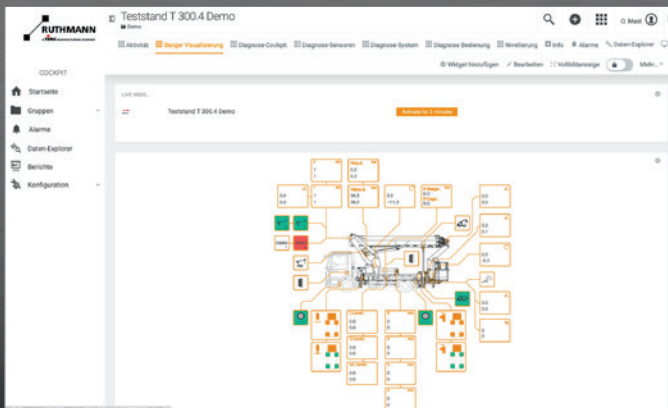
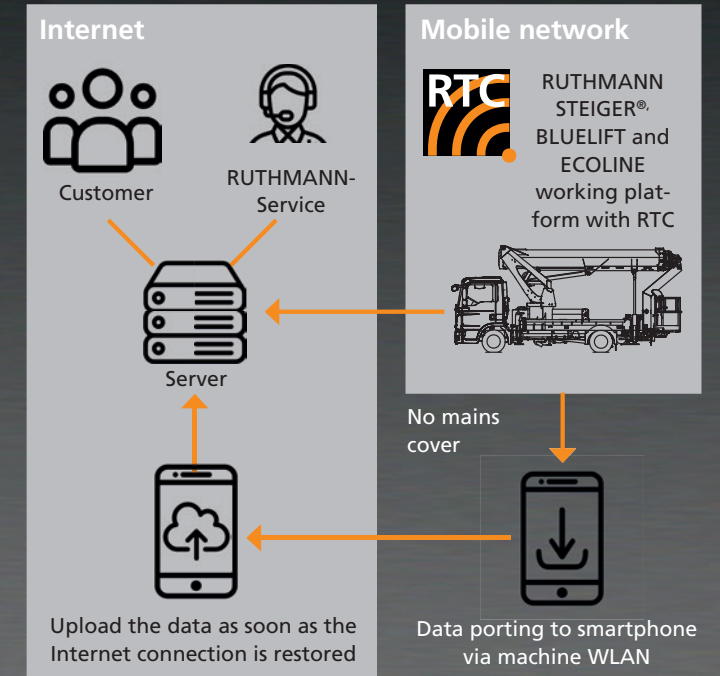


With the RUTHMANN online tool RTC, it is possible to monitor machines such as the STEIGER® T 1000 HF remotely, recognise problems in good time and quickly rectify any faults that may occur.

The newly designed user interface of the RUTHMANN REAL TIME CONNECT is clearly laid out and enables every user to record all relevant machine data immediately and the data is stored in the system. This makes it possible to find and reproduce the causes of faults, even retrospectively.

-  **Fast fault diagnostics**
-  **Fast troubleshooting**
-  **Ensuring a high level of machine availability.**

RTC-Functionality



WE NEED MORE!



Alberto Piñeiro Dadín, Managing Director

'We have been working with 90 m platform for more than 2 years now, quite honestly, the T 900 HF is a unique machine because it is the only machine on the market that can work in dual mode, i.e. working at 90 metres or within the range of the work diagram. The reach is far greater than that of the competition - around 10 metres - we have higher basket capacities and unique operating characteristics.'

'For a few years now, I have been asking Ruthmann to consider the development of larger machines ...

... And we should also have machines with working heights over 90 metres, if possible on 5-axle chassis - or more - but rather 5-axle, to facilitate their transport within our country.'



Adrián Santamarta Berciano, Operator at Grúas Roxu

'The PLAAS division of Grúas Roxu has over 700 work platforms. We have Ruthmann access platforms from 54 to 90 metres.'

The last machine we got was our second 90 metre Ruthmann, which we use particularly in the industrial sector.'

Apart from the strong work diagram of the T 900 HF, what I like most is the compactness of the machine and the ease of operation. Unfortunately, we do miss a few metres of working height from time to time.'

Ruthmann has introduced many innovations in recent years. For example, the remote control, which we use particularly for work in wind energy maintenance and also in the industrial sector in general.'



Javier Touriño Vázquez, Operator at A. Piñeiro Lift

'I'm Javier, I've been working in the industry for around 18 years at Alberto Piñeiro Lift and I've seen Ruthmann launch models with greater working heights and more innovations in recent years.'

Ruthmann, I have a question for you: Have you ever considered developing a machine with more than 90 metres working height on 5 axes?'

i **USEFUL OPTIONAL EXTRAS**

MORE COMFORT
MORE SAFETY
MORE EFFICIENCY
... A MUST FOR LARGE
PLATFORMS!

JUST A FEW EXAMPLES

- +** Lift-up system for safe lifting of material at the basket
- +** Box attachments and superstructures for safely carrying tools and material
- +** Power generator
- +** Lighting equipment on the vehicle, on the supports in and on the cage
- +** Heating systems for the COCKPIT cage control and cage floor
- +** First aid kit in the basket
- +** Movable folding seat for operator in the cage
- +** Camera mounts for TV productions
- +** Underarm camera



Lift-up-system



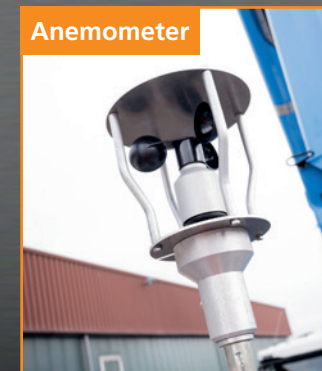
Tool holder



First aid kit



Lighting equipment



Anemometer



Folding seat

STEIGER® T 1000 HF

Innovative technology that you can rely on



SKY
performance
highflex

DRS

Photo: Frédéric Boyadjian

RUTHMANN Holdings GmbH
Ruthmannstraße 4
48712 Gescher
GERMANY

Phone: +49 2863 204-0
Fax: +49 2863 204-212

Internet: www.ruthmann.de
E-Mail: info@ruthmann.de