

RUTHMANN
professionals at work

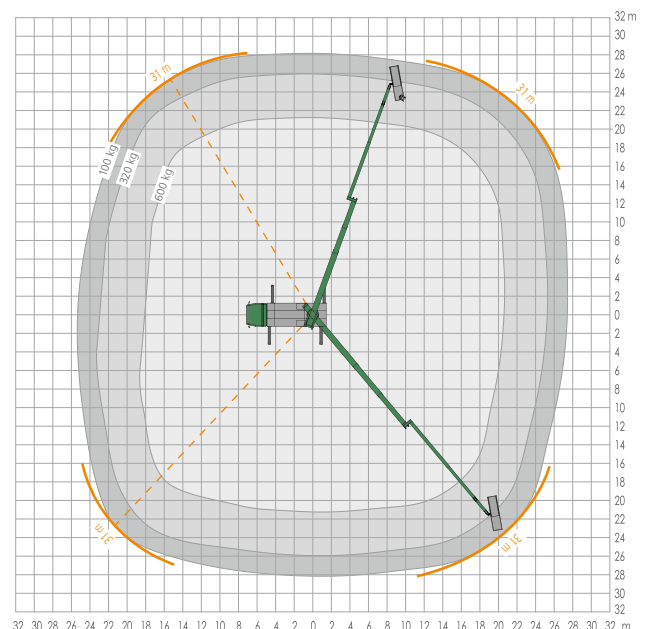
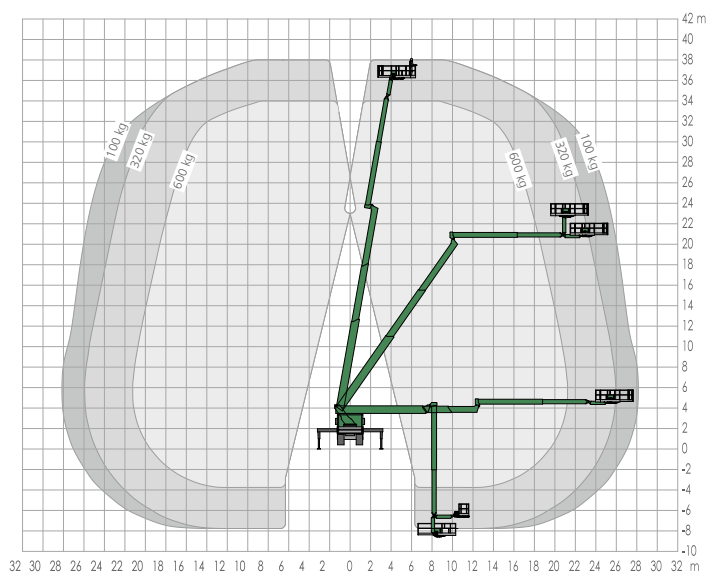
STEIGER® T 380 AE



more information: www.ruthmann.de/airport-steiger

STEIGER® T 380 AE: SPECIAL DESIGN FOR AIRBUS A380

Ultra-modern aerial platform access technology is required in order to repair, care and maintain today's modern aircraft, including the A380. The work needs to be carried out in a safe, fast and cost-effective manner. Only the **RUTHMANNSTEIGER® T 380 AE** (airline equipment) is able to fulfil all these requirements.



STEIGER® T 380 AE



Flexibility:

The T 380 is an aerial platform with a movable jib (RÜSSEL®) at the end of its telescoping boom system. This feature allows work to be carried out on both sides of the aircraft, without constantly moving the aerial platform. The extent of needed movements is very limited because of the amazing operating range of the jib (RÜSSEL®). This greatly increases the very important level of safety.

Capability and Technology:

The „Lift-Up System“, mounted at the working cage, is equipped to tackle any job that comes its way, without costly set-up time. No additional equipment (forklift etc.) is needed in order to drop off or pick up material.



Working Height:

The height of the Airbus A380 is 24.1 metres which means that the T 380, with its 38-metre maximum working height and incredible outreach of 31 metres, is able to service the A380 with ease.



Operating Range:









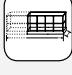




Once the unit is properly positioned, the T 380 demonstrates a perfect operating range. Starting from a preset position, the entire vertical/horizontal tail section on both sides, the greater part of the wings and parts of the fuselage (see picture below) can be reached.

Working Cage:

The optimized aluminium working cage is standard equipment. This telescoping and extremely agile cage accommodate up to 5 mechanics plus tools (600 kg max. load capacity).



RUTHMANNSTEIGER® T 380 AE

| | | | | | |
|-------------------------------------------------------------------------------------|------------------------|---------------|---------------------------------------------------------------------------------------|-------------------------------------|-----------|
|  | Working height | 38.00 m |  | Total height | ≤ 3.95 m |
|  | Lifting height | 36.00 m |  | Total length | 9.76 m |
|  | Outreach* | 31.00 m |  | Permissible inclination | 2° |
|  | Working cage size | 2.42 x 0.97 m |  | Permissible total weight ≥ | 18,000 kg |
|  | Max. working cage size | 3.82 x 0.97 m |  | Range of rotation | 500 ° |
|  | Working cage load | 600 kg |  | Swivelling angle of the jib/RÜSSEL® | 180° |
| * depending on load, angle of rotation and outfit | | |  | Swivelling angle of upper boom | 180° |